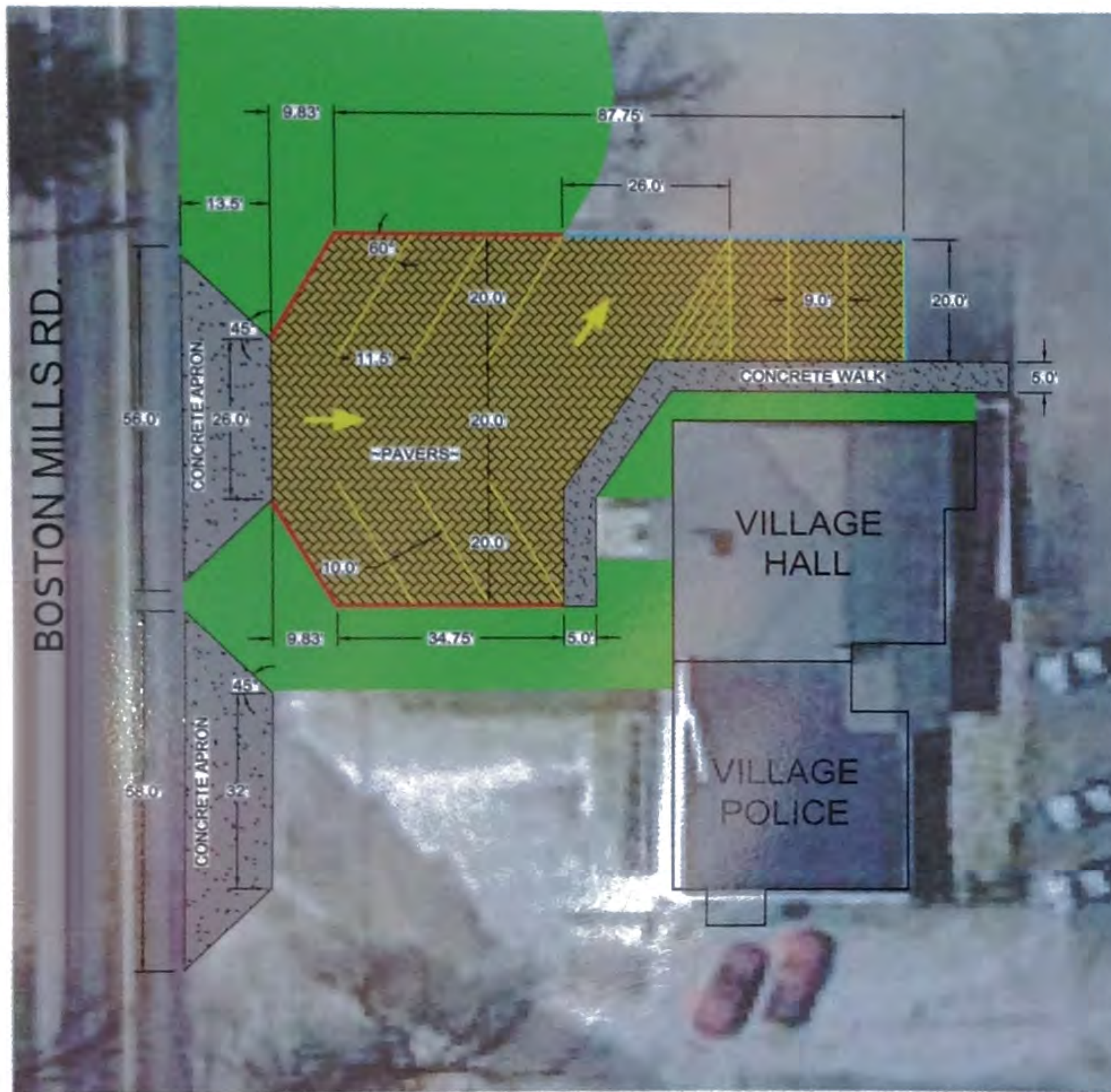


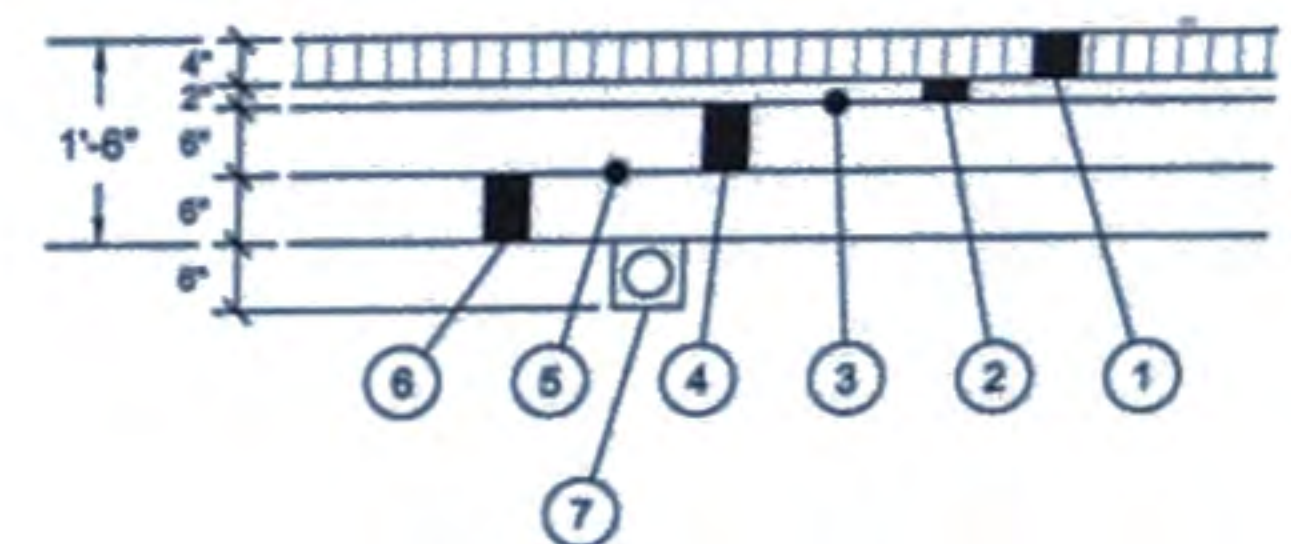
THE VILLAGE OF Boston Heights

Storm Water Demonstration Project

(Funded by Ohio EPA SWIF Grant)



PERMEABLE PAVEMENT SECTION



LEGEND

- ① PERVIOUS PAVERS: CONCRETE PAVERS (4" THICK)
- ② BEDDING STONE: WASHED #8 STONE (2" THICK)
- ③ GEOTEXTILE, NONWOVEN FABRIC, (712.09, TYPE A)
- ④ BASE STONE: WASHED #57 STONE (6" THICK)
- ⑤ TENSAR TRIAX GEOGRID (OR APPROVED EQUAL) (SIZED FOR #4 & #57 STONE)
- ⑥ SUB BASE STONE: WASHED #4 STONE (6" THICK)
- ⑦ ITEM 605 - 6" UNDERDRAIN (WITH #8 OR #57 STONE BEDDING/BACKFILL)

FACT SHEET

ANOTHER **GREEN** STEP FORWARD FOR THE VILLAGE OF BOSTON HEIGHTS, ENCOURAGING CLEANER WATERS AND COMMUNITY PRIDE!

- ◆ THE VILLAGE OF BOSTON HEIGHTS HAS BEEN AWARDED A GRANT IN THE AMOUNT OF \$78,900 FROM THE OHIO ENVIRONMENTAL PROTECTION AGENCY FOR THE VILLAGE HALL STORMWATER MANAGEMENT IMPROVEMENTS
- ◆ THE SWIF GRANT IS AWARDED TO PROJECTS THAT IMPROVE THE QUALITY OF WATER THAT IS GENERATED DURING A RAINFALL EVENT.
- ◆ THE VILLAGE HALL WATER QUALITY IMPROVEMENT PROJECT CONSISTS OF A NEW PERMEABLE PAVEMENT PARKING AREA, SIDEWALK, AND CURBING.
- ◆ RUNOFF FROM AN INITIAL RAINFALL EVENT IS COMMONLY REFERRED TO AS THE "FIRST FLUSH" BECAUSE IT RELEASES AND TRANSPORTS POLLUTANTS THAT HAVE BEEN SITTING ON THE SURFACE. THE NEW SYSTEM OF PERMEABLE PAVERS WILL STORE THE RUNOFF LONG ENOUGH TO ALLOW THE POLLUTANTS TO BE FILTERED, SETTLED OUT OF THE WATER, AND ABSORBED BY THE UNDERLYING SOIL. IN ADDITION, THE EXTENDED DRAIN TIME WILL ALLOW RUNOFF TO INFILTRATE THE GROUND, RECHARGING THE GROUND WATER SYSTEM, THEREBY IMITATING THE NATURAL CYCLE.

OHIO EPA

THIS PROJECT OR PUBLICATION WAS FINANCED IN PART OR TOTALLY THROUGH A GRANT FROM THE OHIO ENVIRONMENTAL PROTECTION AGENCY UNDER THE PROVISIONS OF THE SURFACE WATER IMPROVEMENT FUND. THE CONTENTS AND VIEWS, INCLUDING ANY OPINIONS, FINDINGS, OR CONCLUSIONS OR RECOMMENDATION, CONTAINED IN THIS PUBLICATION ARE THOSE OF THE AUTHORS AND HAVE NOT BEEN SUBJECT TO ANY OHIO ENVIRONMENTAL PROTECTION AGENCY PEER OR ADMINISTRATIVE REVIEW AND MAY NOT NECESSARILY REFLECT THE VIEWS OF THE AGENCY, AND NO OFFICIAL ENDORSEMENT SHOULD BE INFERRED.

LEGEND

- 6" HIGH CURB
- 0" HIGH CURB

VILLAGE ENGINEER:
KROCK-ESSER
Krock Esser Engineering, Inc. www.krockesser.com